

ENERGY TO RUN WITH™



©2005 Blackstone International, LTD. The MFUEL logo is a trademark of Blackstone International LTD. The Universal AC/DC Battery Charger logo is a trademark of Blackstone International, LTD. All other brand names and logos are trademarks or registered trademarks of their respective owners. Specifications are subject to change without notice.



Blackstone International LTD.  
2018 Lord Baltimore Drive, Baltimore, Maryland, 21244 USA

**Environmental Characteristics:**  
Operating Temperature Range: 0° C to 40° C  
Storage Temperature Range: -40° C to 85° C

**Specifications:**  
Worldwide AC Input:  
• 100 to 240 volts AC  
Output Power:  
• Low Output: 2.8V – 8.4V  
Continuous Output Power: Up to 5W  
Unit Dimensions: 111.9mm(L) x 56mm(W) x 41.67mm(H)  
Unit Weight: 89.5g

**Certifications:** CE, FCC, TUV/GS, UL, CUL, CB

**Safety Features:**  
•Over Surge protection  
•Over current protection  
•Over voltage protection  
•Excessive temperature protection

**Universal AC/DC Battery Charger WORLD JACK Configurations:**  
See Product Set Up Guide on reverse side for Plug A, B, C and D configurations.

**In North America:**

1. Slide down latch found on the back of the adapter, and plug A will release. Ensure that the plug locks into a 90° angle.  
2. Plug your electronic device into the JACK and then plug the JACK into the AC wall outlet.  
3. When you are finished, fold down Plug A from the point labeled "PRESS" into the embedded, locked position. Do not try to fold Plug A down by forcing the metal plugs. This action may cause damage to the adapter and/or result in an improperly seated position.

**In Australia/New Zealand:**

1. Slide down latch found on the back of the adapter, and plug A will release. Ensure that the plug locks into a 90° angle.  
2. Twist the left prong in the clockwise position and twist the right prong in the counterclockwise position until they are both in at a 45° angle as in Plug C.  
3. Plug your electronic device into the JACK and then plug the JACK into the AC wall outlet.  
4. When you are finished, twist both prongs back to the vertical position. Then fold down Plug A from the point labeled press into the embedded, locked position. Do not try to fold Plug A down by forcing the metal plugs. This action may cause damage to the adapter and/or result in an improperly seated position.

**In Europe/Asia:**

1. Grasp Plug B and lift it up until it locks in the 90° position.  
2. Plug your electronic device into the JACK and then plug the JACK into the AC wall outlet.  
3. When you are finished, fold down Plug B into the flat, locked position.

**In United Kingdom:**

1. Grasp Plug B and lift it up until it locks in the 90° position.  
2. Remove the UK Key found on the bottom left corner of the adapter.  
3. Insert the UK Key into the ground socket of the AC wall outlet to open the 2 upper power sockets.  
4. Plug your electronic device into the JACK and then plug the JACK into the AC wall outlet.  
5. When you are finished, fold down Plug B into the flat, locked position.  
6. Remove the UK Key from the outlet and return the key to the concealed slot on the Universal AC/DC Battery Charger.

**Using the MFUEL Universal AC/DC Battery Charger: Completely Review Product Setup Guide.**

**AC Wall Outlets:** MFUEL Universal AC/DC Battery Charger lets you use one charger that transforms to fit wall outlets in over 120 countries world-wide to charge all rechargeable AA and AAA batteries. First position the World Jack adapter to fit the desired AC wall outlet. Second, load the included AA/AAA Cradle with 2 rechargeable AA or AAA batteries, matching the (+ / -) signs on the battery to the (+ / -) signs on the cradle. 2 Batteries MUST be loaded into the Cradle for the Universal AC/DC Battery Charger to function. Third, plug the Universal AC/DC Battery Charger into the wall outlet and wait for the LED indicator light to turn YELLOW. The LED indicator light will read RED when the Batteries are charging and Yellow when the Batteries are fully charged. When the AC/DC Battery Charger is plugged into an AC wall outlet with only one or no Batteries loaded into the Cradle, the LED indicator light will read GREEN showing the power is ON and ready for use.

**Auto, Boat, RV:** Many vehicles are equipped with an accessory DC outlet and/or cigarette lighter. Your vehicle may or may not require that the ignition and/or engine be turned on. If your vehicle does not require the ignition be turned on, disconnect your MFUEL adapter before exiting the vehicle to prevent your vehicle's battery from being drained. Check your vehicles owner's manual to determine how your vehicle operates. First, load the included AA/AAA Cradle with 2 rechargeable AA or AAA batteries, matching the (+ / -) signs on the battery to the (+ / -) signs on the cradle. 2 Batteries MUST be loaded into the Cradle for the Universal AC/DC Battery Charger to function. Second, plug the MFUEL Universal AC/DC Battery Charger into the DC outlet and wait for the LED indicator light to turn YELLOW. The LED indicator light will read RED when the Batteries are charging and YELLOW when the Batteries are fully charged. If the AC/DC Battery Charger is plugged into the DC outlet with only one or no Batteries loaded into the Cradle, the LED indicator light will read GREEN showing the power is ON and ready for use. MFUEL recommends that you disconnect your adapter before starting your vehicle's engine. The power may be interrupted causing your electronics to reset.

**Note:** The AA/AAA Cradle can be removed and additional cradles are available separately to charge other types of batteries, including Cell Phone, PDA, Digital Camera, Camcorder, Portable Gaming, Satellite Radio Batteries and more. Visit [www.mfueldirect.com](http://www.mfueldirect.com) for additional cradle information.

**Trouble Shooting Guide**

In most instances, solving problems with your MFUEL Universal AC/DC Battery Charger is simple. If your device is not charging or operating properly, do the following:

1. Disconnect the MFUEL Universal AC/DC Charger from the AC or DC outlet and try to power another device to test if the outlet is functioning properly.

2. If the LED indicator light does not turn GREEN when the cradle is empty or RED when the cradle is full with batteries, it may be burned out or the unit may not be connected to the power supply correctly. Disconnect all connections and reconnect the adapter according to the steps in the Product Setup Guide.

3. If your Batteries are not charging, check if the Batteries are RECHARGEABLE by researching your battery package or contacting the battery manufacturer. Only Secondary RECHARGEABLE Nickel-Metal Hydride and Nickel Cadmium are compatible with the Universal AC/DC Battery Charger. Alkaline Non-Rechargeable Batteries are NOT compatible.

4. If your Batteries are not charging and the LED indicator does not turn YELLOW check to make sure the Positive + and Negative – signs on the batteries are matched with the (+ / -) signs indicated on inside of the cradle. The Batteries will NOT charge if the (+ / -) are not matched up.

3. If you are still experiencing problems, please contact MFUEL.

Before using, please read the following important safety information. Following these simple guidelines will ensure trouble-free operation and optimal performance of the MFUEL Universal AC/DC Battery Charger and your connected electronic devices.

1. Avoid pulling on the adapters, cords and cables. Always grip plugs firmly when unplugging from AC or DC outlet and when disconnecting cables.
2. For indoor use only. Avoid exposure to external heat sources, direct, prolonged sunlight, dust, corrosive chemicals, and moisture.
3. Do not drop or subject the Universal AC/DC Battery Charger to undue shock.
4. Do not place anything on top of the adapter.
5. Do not attempt to service or disassemble. The unit is not user-serviceable. Attempting to disassemble or service the unit can result in electrical hazard, including death from exposure to high voltage. If you experience problems with the unit, discontinue use and contact MFUEL for assistance. Attempting to open or service the unit voids all warranties, express or implied.
6. It is normal for power adapters to become warm during use. Avoid touching the device during use. Avoid placing in direct sunlight of near heat-sensitive materials.
7. Register your MFUEL Universal AC/DC Battery Charger at [www.mfueldirect.com/register](http://www.mfueldirect.com/register) to activate your warranty and Surge Protection Guarantee.

**MFUEL DIGITAL POWER SOLUTIONS™**



**USER MANUAL**



ENERGY TO RUN WITH™

**Congratulations on your MFUEL purchase!**  
MFUEL smart digital technology is the complete all-in-one solution to your charging, power and travel needs.

The MFUEL patented **Universal AC/DC Battery Charger** and included AA/AAA Cradle allows you to charge your AA and AAA Batteries from any DC Cigarette lighter or AC power source in the world. Its innovative design allows you to carry one adapter that transforms to fit many different style wall outlets in over 120 countries worldwide. Compatible throughout Europe, Asia, Australia, New Zealand, North America, South America, and the Middle East.

**PRODUCT REGISTRATION & WARRANTY**  
Surge Protection Guarantee: If MFUEL Universal AC/DC Battery Charger fails to protect your connected electronic device from the potentially disastrous effects of a power surge, MFUEL will repair or replace your connected electronic device. For terms and conditions, please visit [www.mfueldirect.com](http://www.mfueldirect.com). To activate your warranty, register your MFUEL Universal AC/DC Battery Charger at [www.mfueldirect.com/register](http://www.mfueldirect.com/register).

**Package Contents**  
TCKC05W-30  
AA/AAA Cradle  
UK Key

# PRODUCT SETUP GUIDE



# Universal BATTERY AC/DC BATTERY CHARGER

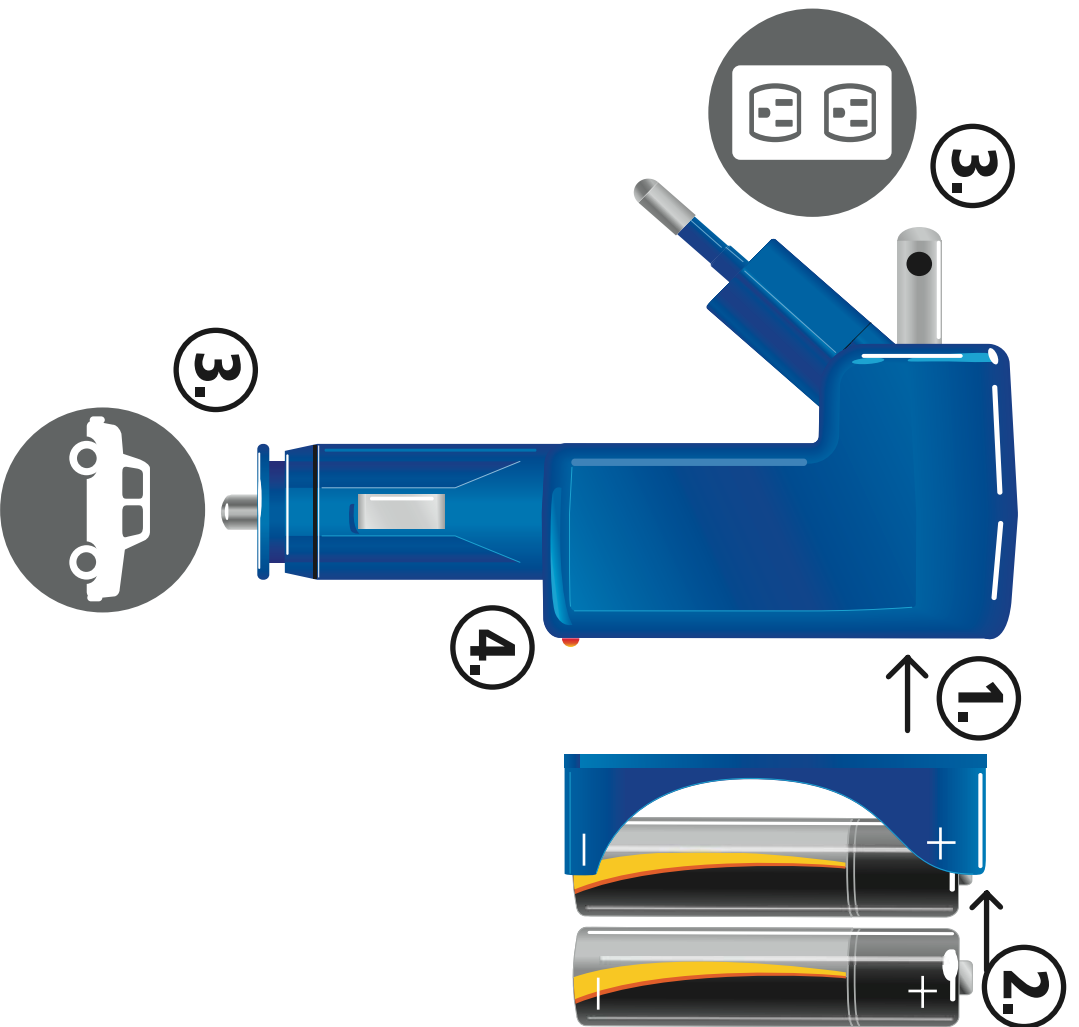
Follow the 4 easy steps to Recharge AA, AAA, and device specific rechargeable batteries with your MFUEL Universal AC/DC Battery Charger.

**1.** Snap cradle onto battery charger by inserting top curved portion of cradle into top of battery charger. Press down on bottom portion of the cradle until it locks into place

**2.** Insert 2 AA or AAA rechargeable batteries into the included AA/AAA cradle. Or insert device specific rechargeable battery into appropriate cradle available at [www.mfueldirect.com](http://www.mfueldirect.com). Match (+ / - ) Signs on batteries to the ( + / - ) Signs on the Cradle.

**3.** Plug the Universal AC/DC Battery Charger into desired power source.  
DC Power: Plug lower male DC Adapter into 12V cigarette lighter outlet.  
AC Power: Snap appropriate World JACK Wall Outlet Plug into 90°locked position. See below and reverse side for International Plug configurations.

**4.** LED Light Indicates:  
GREEN: Battery Charger is ON and ready for USE  
RED: Batteries are Actively Charging  
YELLOW: Batteries are Completely Charged.



For Use Internationally: Use appropriate World JACK Male Plug with foreign wall outlets. Snap appropriate Male Wall Outlet Plug into 90° locked position.

Twist Male Prongs for Australia/New Zealand Configuration.

Insert UK Key into upper wall outlet hole before inserting Universal AC/DC Battery Charger.



North America



Europe Asia



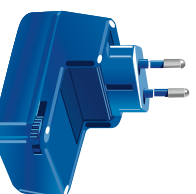
Australia New Zealand



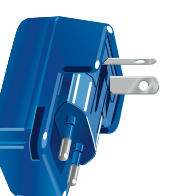
England



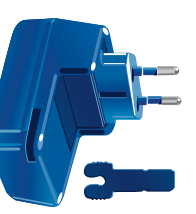
PLUG A



PLUG B



PLUG C



PLUG D